

**MATTAGAMI LAKE DAM HYDROELECTRIC  
GENERATING STATION PROJECT  
PUBLIC COMMUNITY MEETING  
SUMMARY REPORT**

**Submitted to:**

**ONTARIO POWER GENERATION INC.**

**700 University Avenue**

**Toronto, Ontario**

**M5G 1X6**

**Prepared by:**

**SENES Consultants**

**now ARCADIS CANADA INC.,**

**121 Granton Drive, Suite 12**

**Richmond Hill, Ontario**

**L4B 3N4**

**August 2015**

## **Table of Contents**

1.0	Introduction .....	1
2.0	Overview of Public Community Meeting .....	2

### **Tables**

Table 1.	Summary of Comments and Questions Received .....	3
----------	--	---

### **List of Appendices**

Appendix A: Public Notices

Appendix B: Display Panels for Mattagami Lake Dam Hydroelectric Generating Station Project  
Public Community Meeting

Appendix C: Comment Sheet for Mattagami Lake Dam Hydroelectric Generating Station  
Project Public Community Meeting

*Mattagami Lake Dam Hydroelectric Generating Station Project  
Public Community Meeting Summary Report*

---

**Disclaimer:**

**TERMS OF USE:**

**AGREEMENT TO TERMS**

Ontario Power Generation Inc. ("OPG") is providing you with access to this information on the terms set out below. These terms govern the use of this information. By using this information, you acknowledge that you have read and understand these terms and acknowledge that all information provided is subject to change.

**DISCLAIMER AND LIMITATION OF OPG'S LIABILITY**

Your use of this information is exclusively at your own risk. OPG, any entities associated or affiliated with OPG, including but not limited to, limited partnerships, joint ventures, and OPG's subsidiaries, and all of each such corporation's entity's shareholders, directors, officers, employees, agents and representatives (collectively, the "OPG Group") assume no responsibility whatsoever for the availability, accuracy, completeness or currency of any part of, or information in, this information. OPG and each member of the OPG Group have no obligation, and disclaim any duty, to update or correct any part of, or information in, this information. OPG provides this document/website, including all the information in this document/website, solely on an "as is, as available" basis. Neither OPG nor any member of the OPG group provides any representation, warranty, condition or guarantee whatsoever, whether express or implied, that any part of, or information in, this document/website is available, accurate, complete, current, or fit for any purpose. OPG disclaims any and all liability for any losses or damages resulting from, or in any way related to, your use or reliance on this information. OPG assumes no responsibility to resolve any problems or to correct any inaccuracies or defects in the content or in the information.

You will indemnify and hold harmless OPG and each member of the OPG Group from and against all fines, penalties, claims, demands, liabilities, damages, costs and expenses on a dollar for dollar full indemnification basis (including lawyer's fees and expenses) arising in respect of your use or reliance on this information.

**INTELLECTUAL PROPERTY RIGHTS**

Unless otherwise expressly stated in respect of specific information in this document, all information in this document/website is:

Copyright © 2000 - 2015 Ontario Power Generation Inc., all rights reserved.

Any maps contained in this document/website were developed using data and other information sourced from the Ontario Ministry of Natural Resources and Forestry; ESRI; Land Information Ontario open database, as provided by the Ontario Ministry of Natural Resources and Forestry; and Geowarehouse – Title Search Ontario and Land Titles.

You may use and reproduce any information in this document/website solely for educational or non-commercial purposes, so long as you do not change any such information and so long as you include with all such information the following, "Copyright © 2015 Ontario Power Generation Inc., all rights reserved. This information is subject to the general terms of use set out in Ontario Power Generation Inc.'s website ([www.opg.com](http://www.opg.com))." Any other use is strictly prohibited.

If you create a link to this information, you may not: (a) state or imply that OPG authorizes, endorses or sponsors any of the goods, services or other information in the other site; or (b) use any OPG trade-marks, service marks, trade names, copyright or other proprietary or intellectual property rights of OPG (including for meta-linking purposes) without OPG's prior written consent.

**HYPERLINKS**

This information may contain hyperlinks, or pointers, or references to other sites located on servers maintained by third parties over which OPG has no control. Accordingly, your use of any such other sites is entirely at your own risk and OPG assumes no responsibility whatsoever for any use of any such site. None of the hyperlinks, or pointers, or references to such other sites implies that OPG authorizes, endorses or sponsors any such other site or any information in any such other site.

*Mattagami Lake Dam Hydroelectric Generating Station Project  
Public Community Meeting Summary Report*

---

GOVERNING LAW AND FORUM

The laws of Ontario and the laws of Canada applicable in Ontario will govern your use of this information and any suit, action or other proceeding, or dispute or other controversy respecting this information. You irrevocably submit to the exclusive jurisdiction of the courts of Ontario in respect of any suit, action or other proceeding made or brought by you in respect of this information for any matter whatsoever. You may not commence any suit, action or other proceeding in respect of this information for any matter whatsoever, except in Toronto, Canada.

GENERAL

Unless otherwise specified in these terms, words importing the singular include the plural and vice versa and words importing gender include all genders. The term "including" means "including without limitation". If any term in these terms is or becomes illegal, invalid or unenforceable in any jurisdiction, the illegality, invalidity or unenforceability of that term will not affect: (a) the legality, validity or enforceability of the remaining terms of these terms; or (b) the legality, validity or enforceability of that term in any other jurisdiction. These terms, constitute the entire agreement between OPG and you with respect to the use of this information and supersedes all prior terms, agreements, discussions, undertakings, representations, warranties, conditions, guarantees and understandings, whether written or verbal. These terms ensure to the benefit of and bind OPG and you and, to the extent applicable, each of our respective heirs, executors, administrators, personal and legal representatives, successors and assigns.

## **1.0 Introduction**

A public community meeting was held as part of the community engagement requirements of the Large Renewable Procurement (“LRP I”) process for the proposed Mattagami Lake Dam Hydroelectric Generating Station (the “Project”). These meetings are an effective method of providing Project information to the public while simultaneously collecting input, feedback and information from neighbours, stakeholders and collaborating with the public in a live face-to-face setting.

The public community meeting was held for the proposed Project with the following objectives:

- to introduce the proposed Project and the proponent;
- to summarize the results from the completed environmental assessment;
- to introduce the LRP I process and how it applies to the Project, including the current LRP I schedule; and
- to provide the community with an opportunity to share their interests, concerns, input, questions, and ideas with respect to the Project.

The Project was subject to a provincial environmental assessment (“EA”), which began in 2007 and was completed in 2011. The EA included an Environmental Review Report, carried out according to the *Ontario Ministry of Environment Guide to Environmental Assessment for Electricity Projects* (March 2001), Category B Environmental Screening Process (less than 200 megawatts (MW)) (the “Guide”). This EA included, among other topics, an assessment of the effects on the aquatic, terrestrial and socio-economic environment. The proposed transmission line was also included as part of the EA. The Environmental Review Report can be found on the Supporting Docs page of [www.mattagamilakedam-ea.com](http://www.mattagamilakedam-ea.com) (the “Project website”).

In 2011, a minor modification was made to the proposed design of the Project and OPG produced a Supplementary Report in 2012, concluding that:

“It is the determination of the OPG team that the Alternate Proposal will have less environmental effects than the Base Case. Thus, based on this determination and the requirements of the Guide to Electricity Projects, OPG is of the opinion that an “Addendum” as per section B.5.2 of the Guide is not required. Consultation with stakeholders has confirmed this”.

This conclusion was accepted by the Ministry of the Environment. This Supplementary Report can also be found on the Supporting Docs page of the [Project website](#).

Since 2007, public consultation has been a key part of the development process for the Project. Prior to the LRP process, consultation was conducted under the guidance of the Guide. Consultation involved: two formal open houses; a website; on-going individual stakeholder consultation (in-person, phone, e-mail); newsletters; and special stakeholder meetings. A detailed summary of the consultation undertaken can be found in the Report entitled “*Mattagami*

*Lake Dam Public and Agency Consultation Technical Supporting Document*” on the Supporting Docs page of the Project website.

## **2.0 Overview of Public Community Meeting**

The public community meeting for the proposed Project was held at the Timmins Inn and Suites Convention Centre, Salon A, located at 1800 Riverside Drive in Timmins, Ontario on Thursday June 25, 2015 from 4:00 pm to 8:00 pm.

The public was given notification of the meeting via distribution of the LRP I Prescribed Form – “Notice of Public Community Meeting”, a minimum of 15 days prior to the meeting, using the following methods:

- Advertised in local newspapers once a week, for two weeks:
  - Published in English in the **Timmins Daily Press**:
    - Ad 1 – Friday May 29
    - Ad 2 – Thursday June 4
  - Published in English in the **Timmins Times**:
    - Ad 1 – Thursday May 28
    - Ad 2 – Thursday June 4
  - Published in French in **Le Voyageur**:
    - Ad 1 – Wednesday May 27
    - Ad 2 – Wednesday June 3
- Sent to required stakeholders:
  - June 8 (via courier and regular mail) and June 9 (via e-mail and fax)
- Posted on the Project website:
  - June 9

A copy of the Notice of Public Community Meeting is provided in Appendix A.

The meeting was held in a “trade fair” format with Project team members present to meet with the attendees, listen to concerns and issues, and address questions where appropriate. Four (4) OPG employees and one (1) consultant from SENES (ARCADIS) were present. Twenty-two (22) informational poster boards were on display providing: 1) an introduction and overview of the Project, 2) an overview of OPG, 3) results from the completed EA, 4) an overview of the LRP I process and how it applies to the Project, and 5) Site Considerations Information. A copy of the display panels was posted to the Project website after the meeting, and is also included in Appendix B.

Copies of informational materials were made available at the meeting including the Notice of Public Community Meeting and copies of the Community Engagement Plan for the proposed Project. These materials are also available on the [Project website](#).

Members of the public attended the public community meeting and twenty (20) attendees registered by signing in upon entering the meeting. Note, some did not want to sign in. In addition to speaking with team members, all attendees were provided with a comment sheet, and were asked to provide any comments, concerns, or questions to OPG via this mechanism. There was an option to submit the sheet at the public meeting or to send the sheet at a later date via e-mail to [Phil.Shantz@arcadis.com](mailto:Phil.Shantz@arcadis.com), via fax, or by regular mail. The comment sheet was also made available on the Project website following the meeting. A copy of the comment sheet is included as Appendix C.

The overall tone of the meeting was generally neutral to positive, with concerns raised adequately addressed by the Project team. Some concerns were raised and discussed at the meeting (see Table 1 below). OPG has noted and recorded all questions, comments, and concerns received.

Table 1 provides an overview of general comments and questions. Two completed comment forms were received by the Project team, and the overall tone of the comments was neutral to positive, including support for the Project and some concerns communicated regarding impacts to water levels and fish spawning. OPG has offered to speak to these individuals further regarding their concerns if they are interested. OPG is committed to building an open and transparent relationship with the local community and is intent on consultation and communication with the public from the early project stages, throughout the course of the LRP I process, and beyond if the Project is accepted to proceed.

OPG appreciates and encourages public input and welcomes questions and feedback.

**Table 1. Summary of Comments and Questions Received**

Issue	Comments and Questions Received	Responses
<b>Construction</b>	What is the construction schedule? When will construction start? When will the facility be completed?	Contracts are expected to be offered to successful proponents to the LRP I RFP by the end of the year. If the Project is successful, development plans will be finalized and permits must be obtained prior to construction starting. Once construction starts, it will be approximately 2 ½ to 3 years (depending on construction seasons) before the facility is completed.
	Concern about impacts to nearby cottagers due to blasting and noise resulting from construction.	We will provide communications to the local cottagers associations about blasting and noise. Blasting is highly controlled and under the auspices of a designated blasting engineer. No impacts from blasting are expected on cottages. Blasting impacts are intended to be very localized within several meters (m) of the actual blast.  OPG does not anticipate noise above what is

*Mattagami Lake Dam Hydroelectric Generating Station Project  
Public Community Meeting Summary Report*

Issue	Comments and Questions Received	Responses
		typical for similar construction projects. During execution of the Project, OPG must ensure that the Project is in compliance with all noise by-laws and regulations.
<b>Construction (Continued)</b>	Will the bridge be closed during construction?	We do not anticipate the bridge will need to be closed for an extended period of time. Extended traffic delays are not expected. As noted in the EA, OPG will communicate road closures to the public.
	Will the design of the station be subject to change? Is the current design finalized?	Key components and the anticipated capacity (MWs) are not expected to change materially. There may be some field fitting once the construction contractor is selected.
	I would have preferred to see the powerhouse located on the east side of the river/dam, but I understand that there is a trade-off as a result.	Comment Noted.
<b>Employment Opportunities</b>	Will workers be hired locally?	Once the construction contractor is selected, it will be the contractor's responsibility to hire resources to complete the work. While it cannot be guaranteed, it is expected that the workers will likely come from Northeastern or Northern Ontario.
	Will prospective local workers only be hired through a union?	Once the construction contractor is selected, it will be the contractor's responsibility to hire resources to complete the work. Note that the Electrical Power Systems Construction Association (EPSCA) negotiates and administers collective agreements with the Building Trades for OPG and all contractors performing trades work on OPG generating sites.
	How will it be possible to obtain employment for the station's construction phase?	Once the construction contractor is selected, it will be the contractor's responsibility to hire resources to complete the work. If received, we will be happy to pass along employment information to the hiring contractor.
<b>Environmental Assessment</b>	I am pleased that the environmental assessment has already been completed.	Comment Noted.
<b>Environmental Effects</b>	Why are fish ladders not required?	Fish ladders are not required by government agencies as historically Kenogamissi Falls would have been virtually impassable for fish moving upstream. The main fish species (whitefish and walleye) are not migratory species similar to salmon.

*Mattagami Lake Dam Hydroelectric Generating Station Project  
Public Community Meeting Summary Report*

Issue	Comments and Questions Received	Responses
<b>Environmental Effects (Continued)</b>	Explain the minimum flow requirement. Is this any different than the current operating plan?	The minimum flow requirement is intended to continually provide a sufficient level of flow downstream of the powerhouse to sustain aquatic life in the River such as crayfish, minnows, insects and other benthic invertebrates. The minimum flow also mitigates potential effects of fish stranding. An administrative amendment will be made to the existing Water Management Plan to reflect the minimum flow requirements identified in the EA.
	Concern that the minimum flow requirement will not be sufficient to allow fish to travel past the dam.	The minimum flow isn't intended to allow fish to travel past the dam. At present, there would essentially be no fish movement above and below the dam owing to the location of the dam but also the steepness of the Falls. Minimum flow is typically provided to protect spawning or to maintain habitat.  There will be no change from the existing situation.
	Will water levels and river flow change due to the existence of the facility?	Water levels on the upstream (Mattagami) and downstream (Kenogamissi) Lakes will be managed according to the existing Mattagami River System Water Management Plan approved levels. This Project does not propose any changes to that.
	Concern that the new facility will affect the water level at local cottages.	The Project will not impact water levels at the cottages. Water levels will adhere to the existing compliance levels identified in the Mattagami River System Water Management Plan.
	Will you still follow the same Water Management Plan (WMP), or will it have to be done once again?	We will follow the Mattagami River System Water Management Plan. There will be an administrative amendment to reflect the additional minimum flow requirement.
	Will you provide the spawning flow for walleye?	There are no planned changes to the spawning flow for walleye in the spring. This is a current commitment in the Water Management Plan.
<b>Existing Mattagami Lake Dam</b>	Will the existing dam need to be rebuilt?	The dam does not need to be rebuilt; it is in good condition.
<b>First Nations</b>	Do you have a First Nation partner? If so, how much equity do they hold?	It is intended that Mattagami First Nation will be a partner in the Project. As discussions are currently ongoing, OPG cannot release any further information at this time.
	Are the local First Nations aware of the Project?	Yes. In addition, it is intended that Mattagami First Nation be a partner on the Project. Consultation has also been undertaken with other First Nations and local Metis interests.

*Mattagami Lake Dam Hydroelectric Generating Station Project  
Public Community Meeting Summary Report*

Issue	Comments and Questions Received	Responses
<b>Large Renewable Procurement (LRP) I Process</b>	How many other companies are competing with OPG for the 75 MW?	There are six (6) entities in total (including OPG) that are qualified to participate in the LRP I process for waterpower projects.
	What will occur if OPG does not win the bid?	Should the Project not succeed in being offered a contract, the Project will not continue under the LRP I RFP process. The team will continue to look for other opportunities to facilitate the development of the Project.
	Will you hold another public community meeting if OPG wins the LRP I bid?	No additional public community meetings are planned in relation to the LRP I process.
<b>Miscellaneous</b>	Will you be willing to meet with the local cottagers at their annual meeting next year?	OPG has expressed to the cottagers association that, upon request for next year's annual meeting, the Project team would be pleased to attend to discuss the Project.
	Where will the portage route be located? When will it be created?	The portage will largely follow the existing access road to the dam and then follow Kenogamissi Falls Road to the boat launch on Kenogamissi Lake.  The portage is largely in place already but would need to be marked and laid out during the construction period.  During construction, temporary access will be provided by the contractor.
	Will we be able to fish downstream of the bridge?	For public safety reasons, OPG cannot allow the public to fish immediately downstream of its powerhouses. Flow shifting is one example of a public safety risk.
	At some point of time, logging will take place on the Mattagami Lake Dam roadway.	Comment Noted.
	I am in favour of this Project.	Comment Noted.
<b>Operations</b>	Concern pertaining to noise resulting from facility operations. Will any noise be heard from local cottages?	The EA covered noise from both construction and operations. Our assessment concluded that "based on available baseline information and potential effects as well as the implementation of recommended mitigative measures, the effects during construction can be mitigated. They will be minimal, localized and short-term. During operations, OPG's EA concludes that the proposed Project will have negligible effects.
	When the station is in operation, when will it be generating power?	Generally, the facility is expected to operate year round and is planned to produce energy when minimum turbine flow is available.

*Mattagami Lake Dam Hydroelectric Generating Station Project  
Public Community Meeting Summary Report*

---

Issue	Comments and Questions Received	Responses
<b>Safety</b>	Concern regarding site access and site restrictions. Will there be a fence located along the shoreline and/or in areas that restrict public access?	Public safety measures, including some stretches of fencing, will be in place, particularly in areas where the public might be able to gain access to structures or areas of the River where water levels may fluctuate.
<b>Transmission</b>	Can you provide power from the station directly to local cottagers? Why do you have to connect directly to the grid?	If the Project is developed under an LRP I contract, the generation is to be delivered to the provincial grid.  OPG is also not a licensed transmission or distribution company and is not in the business of selling electricity directly to customers.
	Will there be any change to the existing transmission line?	There will be no change to the existing Hydro One transmission line. A new line to connect the facility to the Hydro One transmission line will be constructed.
	There is an old transmission line located in the woods.	Comment Noted.

**APPENDIX A**  
**Public Notices**

## Notice of Public Community Meeting For a Project Proposal Under the Large Renewable Procurement

The proponent identified below is proposing to submit a proposal to the Independent Electricity System Operator (IESO) to design, build, and operate a Large Renewable Project for the generation of electricity under the IESO's Large Renewable Procurement (LRP).

The LRP is a competitive process for procuring large renewable energy projects generally larger than 500 kilowatts. At the conclusion of the LRP, the IESO may award contracts for successful projects up to the specified procurement targets for each renewable fuel: 300 megawatts (MW) for wind, 140 MW for solar, 75 MW for waterpower, and 50 MW for bioenergy.

This notice is being distributed to notify members of the public of a public community meeting that has been scheduled to discuss the Large Renewable Project proposal. Information regarding the proponent, the Large Renewable Project proposal, and the meeting details are described below.

This public community meeting is being held as part of the early community engagement requirements of the LRP. The public community meeting will present details about the Large Renewable Project and its proposed connection line. Representatives of the proponent will be available to discuss the Large Renewable Project and the overall LRP process. Should this Large Renewable Project be awarded a contract, the Large Renewable Project would need to obtain all required permits and approvals and conduct any further required community engagement activities.

Further details regarding the LRP are available at [www.ieso.ca/lrp](http://www.ieso.ca/lrp).

### Proponent and the Large Renewable Project proposal

Proponent:	Ontario Power Generation Inc. ("OPG"), as the Qualified Applicant, through an associated Special Purpose Entity (referred to as the "proponent")
Qualified Applicant from the LRP Request for Qualifications stage associated with the proponent:	Ontario Power Generation Inc.
Name of the Large Renewable Project proposal:	Mattagami Lake Dam Hydroelectric Generating Station (GS)
Renewable fuel of the Large Renewable Project:	Waterpower
Proposed capacity of the Large Renewable Project (MW):	5-7 MW
Proposed connection point of the Large Renewable Project:	T61S

### Proposed location of the Large Renewable Project and proposed connection line

Located in the Unorganized Territories of Gouin and Hassard at the Mattagami Lake Dam, which is at the outlet of the Mattagami Lake (Kenogamissi Falls) on the Mattagami River, about 60 kilometres (km) south of the City of Timmins. An approximately 3 km connection line would connect the generating station to the existing Hydro One T61S transmission circuit.

The provincial Grid Cell Numbers on which the Large Renewable Project is proposed to be located are 17MP5818 and 17MP5817.

### Public community meeting information

Timmins Inn & Suites Convention Centre, Salon A  
1800 Riverside Dr Timmins

Thursday, June 25, 2015

4:00 p.m. to 8:00 p.m.

### Contact information for the proponent

Matt MacDonald

Project Manager  
Ontario Power Generation

Phone: (416) 592-3990

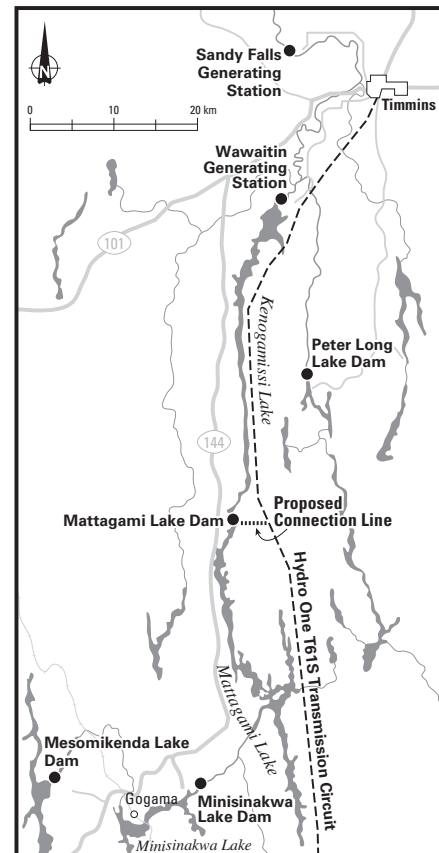
E-mail: [matt.macdonald@opg.com](mailto:matt.macdonald@opg.com)

700 University Avenue H18 D16  
Toronto, ON M5G 1X6

Project Website:  
[www.mattagamilakedam-ea.com](http://www.mattagamilakedam-ea.com)

Proponent Website: [www.opg.com](http://www.opg.com)

**ONTARIOPOWER  
GENERATION**  
[opg.com](http://opg.com)



# Avis de réunion publique concernant une proposition de projet dans le cadre du processus d'approvisionnement de grands projets d'énergie renouvelable

Le promoteur désigné ci-après souhaite présenter une proposition à la Société indépendante d'exploitation du réseau d'électricité (SIERE) en vue de concevoir, de construire et d'exploiter un grand projet d'énergie renouvelable visant à produire de l'électricité aux termes du programme d'approvisionnement de grands projets d'énergie renouvelable (AGER) de la SIERE.

L'AGER est un processus concurrentiel de sélection de grands projets d'énergie renouvelable ayant en général une capacité de plus de 500 kilowatts. À l'issue du processus d'AGER, la SIERE pourra octroyer des contrats à l'égard des projets retenus en respectant les cibles d'approvisionnement établies relativement à chacun des carburants renouvelables, soit : 300 mégawatts (MW) pour l'énergie éolienne, 140 MW pour l'énergie solaire, 75 MW pour l'hydroélectricité et 50 MW pour la bioénergie.

Le présent avis vise à informer les membres du public qu'une réunion publique sera tenue pour discuter du grand projet d'énergie renouvelable proposé. Plus de renseignements sur le promoteur et le projet proposé sont présentés ci-dessous.

La réunion publique est organisée conformément aux exigences prévues par l'AGER en matière de mobilisation des collectivités en début de processus. Elle fera le point sur certains aspects du grand projet d'énergie renouvelable et de sa ligne de raccordement projetée. Des représentants du promoteur seront sur place pour discuter du grand projet d'énergie renouvelable ainsi que du processus d'AGER dans son ensemble. Si ce grand projet d'énergie renouvelable devait faire l'objet d'un contrat, toutes les approbations et tous les permis nécessaires devraient également être obtenus et toute activité supplémentaire requise en matière de mobilisation des collectivités devrait être réalisée.

Pour en savoir davantage sur l'AGER, rendez-vous à l'adresse suivante : [www.ieso.ca/lrp](http://www.ieso.ca/lrp) (en anglais).

## Détails concernant le promoteur et le grand projet d'énergie renouvelable proposé

Promoteur :	Ontario Power Generation Inc. (« OPG »), en qualité de demandeur qualifié, par l'intermédiaire d'une entité ad hoc spéciale associée, (dénommé le « promoteur »).
Demandeur qualifié à l'issue de l'étape de demande de qualifications de l'AGER présentée à l'égard du promoteur :	Ontario Power Generation Inc.
Nom du grand projet d'énergie renouvelable proposé :	Centrale hydroélectrique du barrage de Mattagami Lake (« CH »)
Carburant renouvelable du grand projet d'énergie renouvelable :	Hydroélectricité
Capacité projetée du grand projet d'énergie renouvelable en MW :	5 à 7 MW
Point de raccordement projeté du grand projet d'énergie renouvelable :	T61S

## Emplacement proposé du grand projet d'énergie renouvelable et de la ligne de raccordement projetée

Situé dans les Territoires non organisés de Gouin et Huard se trouvant à la décharge du lac Mattagami (soit à la hauteur des chutes Kenogamissi) sur la rivière Mattagami, à environ 60 km au sud de la ville de Timmins. Une ligne de raccordement d'environ 3 km relierait la centrale électrique à la ligne de transport d'énergie existante appartenant au circuit de transmission T61S d'Hydro One.

Les numéros de cellule de la grille provinciale identifiant l'emplacement proposé du grand projet d'énergie renouvelable sont 17MP5818 et 17MP5817.

## Lieu, date et heure de la réunion publique

Timmins Inn & Suites Convention Centre, salon A  
1800, promenade Riverside, Timmins

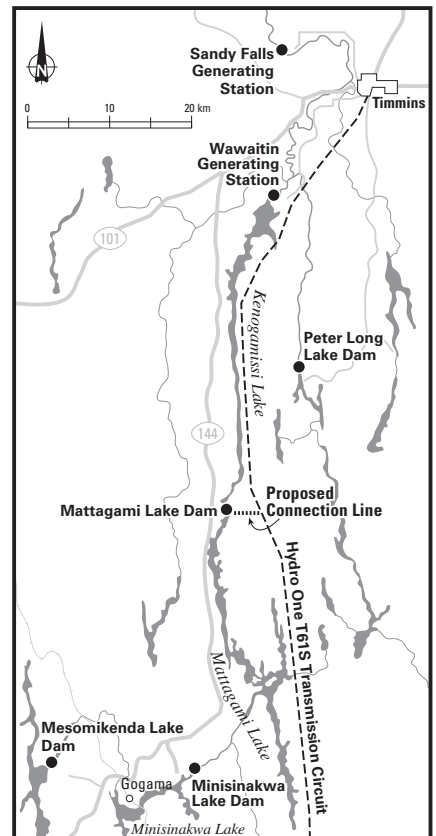
Le jeudi 25 juin 2015

De 16 h à 20 h

## Personnes-ressources du promoteur

Matt MacDonald
Chef de projet Ontario Power Generation
Téléphone : 416 592-3990
Courriel : <a href="mailto:matt.macdonald@opg.com">matt.macdonald@opg.com</a>
700, av. University H18 D16 Toronto, ON M5G 1X6
Site Web du projet (en anglais) : <a href="http://www.mattagamilakedam-ea.com">www.mattagamilakedam-ea.com</a>
Site du promoteur : <a href="http://www.opg.com">www.opg.com</a>

**ONTARIOPOWER**  
**GENERATION**  
opg.com



**APPENDIX B**

**Display Panels for Mattagami Lake Dam Hydroelectric Generating Station Project  
Public Community Meeting**

Mattagami Lake Dam  
Hydroelectric Generating Station Project

Public Community Meeting

# Welcome to our Public Community Meeting



# Meeting Objectives

## Public Community Meeting

- To introduce the Mattagami Lake Dam (MLD) Hydroelectric Generating Station (GS) Project (“the Project”)
- To summarize the results from the completed Environmental Assessment
- To introduce the Large Renewable Procurement (LRP) process and how it applies to the Project, including the current LRP schedule
- To provide the community with the opportunity to share their interests, concerns, input, questions, and ideas with respect to the Project



# Who is Ontario Power Generation?

Public Community Meeting

- An Ontario-based electricity generation company whose principal business is the generation of electricity in Ontario.
- Focuses on efficient production of electricity from its generation assets, while operating in a safe, open and environmentally responsible manner.
- A commercial company, owned by the Province of Ontario – its sole shareholder.
- Ontario needs more electricity and OPG has been given a mandate from the Province of Ontario to develop and expand its hydroelectric capacity.
- This Project will provide more clean renewable environmentally friendly electricity for Ontario.
- Under the LRP process, OPG is a Qualified Applicant, eligible to bid through a Special Purpose Entity for an LRP Contract.

# History of the Mattagami Lake Dam

Public Community Meeting

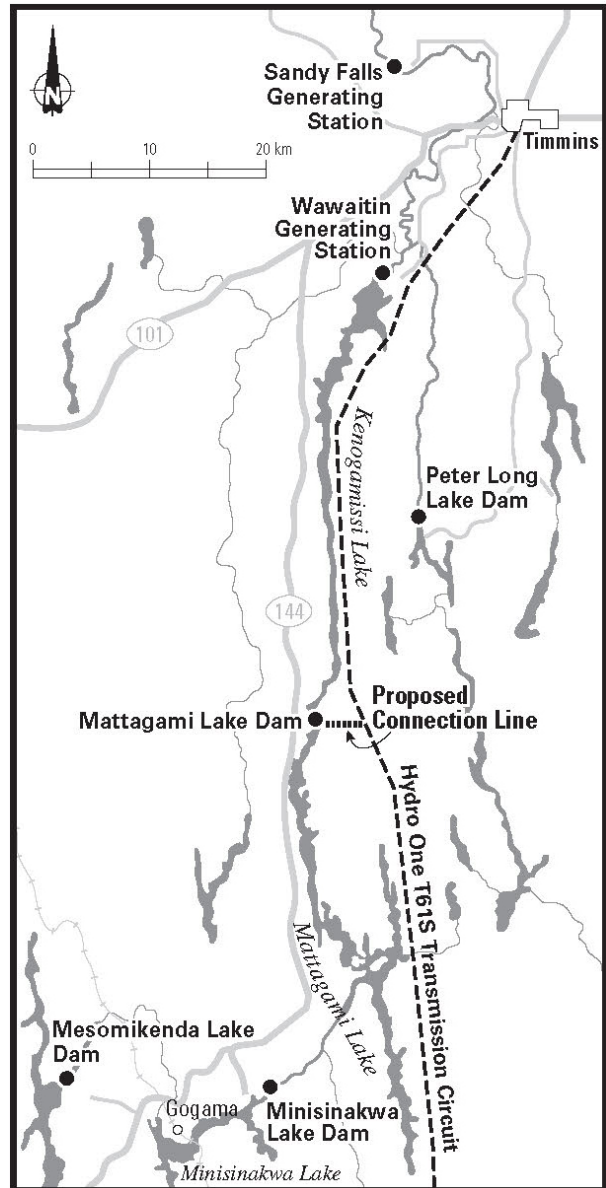
- The Mattagami Lake Dam at Kenogamissi Falls was built by the Northern Power Company in 1921.
- Ontario Hydro acquired the site in 1944.
- The Mattagami Lake Dam is currently owned and operated by OPG.
- The Dam provides flood mitigation for the City of Timmins as it has the largest storage capacity on the upper Mattagami River system.



# Project Overview

Public Community Meeting

- Ontario Power Generation Inc., through a Special Purpose Entity, is proposing to develop a small run-of-the river generating station of approximately 5 - 7 megawatts (MW), adjacent to OPG's existing Mattagami Lake Dam at the Kenogamissi Falls on the Mattagami River.
- A transmission line will be needed to connect the proposed generating station to Hydro One's existing 115 kilovolts (kV) transmission line located approximately 3 kilometers to the east.
- The Project will comply with the approved Mattagami River System Water Management Plan and will operate as a run-of-the-river facility.



# Partnering with Mattagami First Nation

Public Community Meeting

- OPG and Mattagami First Nation have signed a Memorandum of Understanding (MOU) and discussions are well advanced concerning the possibility of the parties entering into a commercial relationship with respect to the Project.
- A key objective of the parties is for the Project to provide mutual benefits to both Mattagami First Nation and OPG.



**ONTARIO POWER**  
GENERATION



Mattagami First Nation Council and OPG representatives sign an MOU on the Project to begin discussions (January 25, 2006)

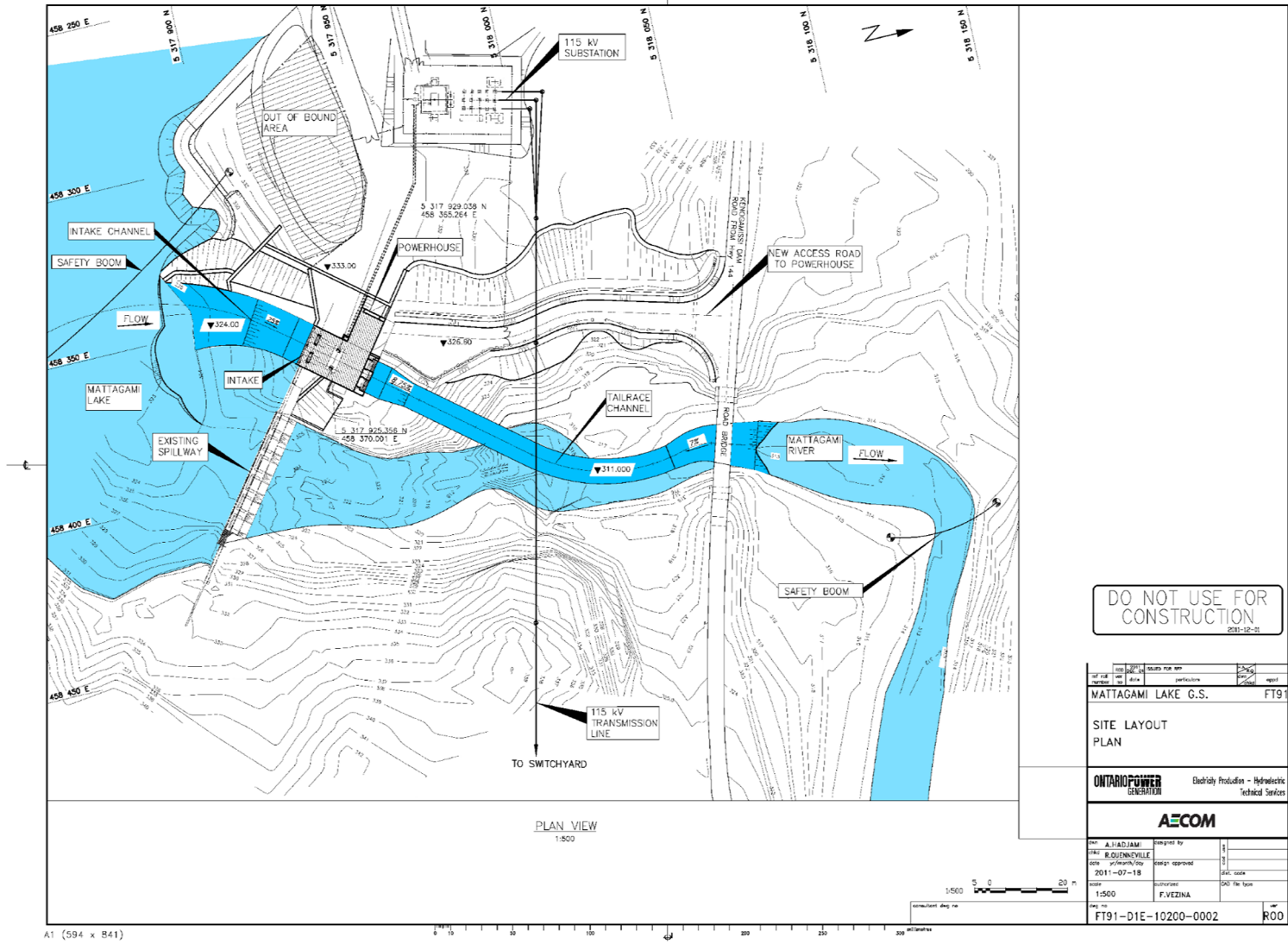
# Planning Background

## Public Community Meeting

- OPG and Mattagami First Nation began studying the hydroelectric development potential for Mattagami Lake Dam in 2006.
- In 2006, an environmental assessment was initiated according to the Ontario Ministry of Environment's "Guide to Environmental Assessment Requirements for Electricity Projects" (March 2001) under the Ontario *Environmental Assessment Act (EA Act)*.
- A Statement of Completion for the environmental assessment was issued in 2011.
- In 2011, OPG made some modifications to the Project's design and issued a Supplementary Report in 2012 that concluded the revised Project would have slightly less effect on the natural environment than the previous concept.
  - ◆ No Addendum was required to the published Environmental Report.
- In 2012, engineering and design work was substantially completed.
- In 2015, with the Large Renewable Procurement (LRP) process, there is an opportunity to realize the development of this hydroelectric project.

# Project Design

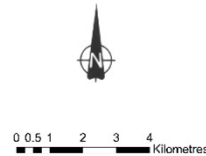
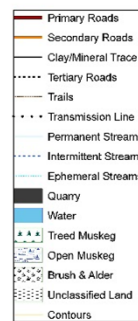
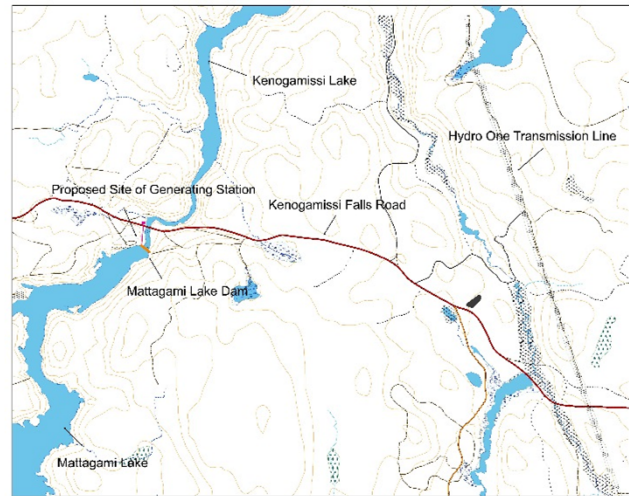
## Public Community Meeting



# Transmission Line

## Public Community Meeting

- A 115 kilovolts (kV) double wooden pole transmission line is required to connect the proposed GS to the **existing** Hydro One transmission line which connects the Timmins Transformer Station to the north and the Shiningtree Distribution Station to the south.
- The proposed transmission line will be approximately 3 km in length and require a 45 m right-of-way.
- The selected transmission line route was a former utility corridor that has good access and does not impact any significant values or features.
- Approximately 12 – 15 hectares of mainly young jack pine and spruce plantations, young hardwood stands and some older mixed wood stands would be cleared for the transmission line.



Existing 115 kV Hydro One Transmission Line

## Public and Agency Consultation

- Public and agency consultation has been a key part of the development process for the MLD Project since 2007.
  
- EA consultation activities thus far have involved:
  - ◆ 2 formal Open Houses
  - ◆ Project website
  - ◆ On-going stakeholder consultation (in-person, phone, e-mail)
  - ◆ Newsletters
  - ◆ Special stakeholder meetings
  
- The public and agency consultation process for the Project has been comprehensive and inclusive of all interested individuals and municipal, provincial, and federal agencies.

# Environmental Assessment Major Findings

Public Community Meeting

- A small amount of forest clearing is necessary for the Generating Station, transmission line and related infrastructure.
- Much of the forest to be cleared has been previously harvested.
- Proposed mitigation measures to protect critical walleye and lake whitefish spawning habitats will result in no net loss of spawning habitat.
- Constructor will be required to adhere to a large number of environmental assessment and permit requirements.
- During construction, OPG will require that the contractor develop and implement an environmental management plan on site that will address:
  - ◆ Erosion and sediment control
  - ◆ Spills management and use of hazardous materials
  - ◆ Emergency response and preparedness
  - ◆ Waste management and rehabilitation of the Site



# Socio-Economics and Land Use

Public Community Meeting

## Economic Impact

- Project economic expenditure in Northeastern Ontario expected to be approximately \$10 M with an estimated 50-60 direct and 30-40 indirect and induced person years of employment to be generated.
- Local and regional socio-economic benefits will occur in the execution phase of the Project (e.g., construction, jobs, contracts and purchases) and service (e.g., accommodation, retail, food service) sectors and general increased stimulus in local and regional spending.

## Crown Land Use

- Proposed Generating Station is compatible with existing crown land use direction for the area.
- For safety reasons, the River from Mattagami Lake Dam to Kenogamissi Lake will be restricted from future public use.
- A portage will be made available to allow public use from Mattagami Lake to Kenogamissi Lake.



# Future Operations

## Public Community Meeting

- Water level compliance requirements on Kenogamissi and Mattagami Lakes will be unchanged by the Project.
- Proposed GS will result in no appreciable change to monthly average flows and water elevations.
- During walleye spawning season, a flow of 12 to 15 cubic meters per second (cms) will be maintained.
- OPG and MNRF have agreed to changes to the existing operating regime for Mattagami Lake Dam that will require a minor amendment to the Water Management Plan.
  - ◆ When there is insufficient flow to operate the Generating Station, a minimum of 2.8 cubic metres per second of flow will be released.
- The proposed operating regime will ensure there will be no changes in the volume of water and no significant changes in water velocity passing over the critical walleye habitat.
- The new Generating Station will be remotely operated and maintained by OPG's Northeast Operations located in Timmins.

# Project Benefits

Public Community Meeting

- Create more clean renewable power for Ontario.
- Capitalize on the existing control dam that is already in place.
- Generate a positive economic benefit during construction for local communities.
- Add electrical generation capacity without changing the approved Water Management Plan's operating regime.



# Large Renewable Procurement (LRP)

## Public Community Meeting

- In June 2013, the Ministry of Energy directed the Ontario Power Authority (OPA) to end the procurement of large renewable energy projects through the Feed-in Tariff (FIT) Program (generally > 500 kW) and replace it with another program.
- The replacement program is called the Large Renewable Procurement (LRP) Program. It is a competitive process run by the OPA, which has now merged with the Independent Electricity System Operator (IESO). The IESO designed the program following consultation with Aboriginal communities, municipalities and stakeholders.
- Procurement targets are as follows:

	Wind	Solar	Bioenergy	Hydroelectric
LRP I (2014)	300 MW	140 MW	50 MW	<b>75 MW</b>
LRP II (2015)	300 MW	140 MW	50 MW	45 MW
LRP III (2016)	TBD	TBD	TBD	TBD

- Each procurement process consists of a Request for Qualification (RFQ), followed by a Request for Proposals (RFP).
  - ◆ RFQ qualifies proponents (developers) and allows them to participate in the RFP
  - ◆ RFP qualifies specific projects so that contract offers can be made

# LRP Schedule

## Public Community Meeting

The competitive Large Renewable Procurement (LRP) Program is well underway following various IESO-lead consultation efforts and the completion of the Request for Qualification process.

Milestone	Date
RFQ Release	July 2014
RFQ Submission	September 2014
Qualified Proponents Announced	November 4, 2014
Release of draft LRP I RFP and Contract	November 14, 2014
Release of final LRP I RFP, final LRP I Contract	March 10, 2015
Question and Comment Period Begins	April 13, 2015
Deadline for Issuing Addenda	July 31, 2015
Registration Deadline	August 7, 2015 at 3:00pm
Question and Comment Period Ends	August 14, 2015
Proposal Submission Deadline	September 1, 2015 at 3:00pm
Evaluation of Proposals	September – November 2015
Notification of Selected Proponents (Target Date)	November – December 2015

- ◆ Evaluation of Proposals:
  - Stage 1 – Completeness Requirements
    - Pass or Fail
  - Stage 2 – Mandatory Requirements
    - Pass or Fail
  - Stage 3 – Rated Criteria
    - Point score awarded for community engagement and Aboriginal participation
    - 0 – 100 points available
  - Stage 4 – Evaluation, Testing and Selection
    - Proposal Price Statement opened
    - Economic Evaluation
    - Capacity Testing
    - Identification of Selected Proponents

# LRP Community Engagement

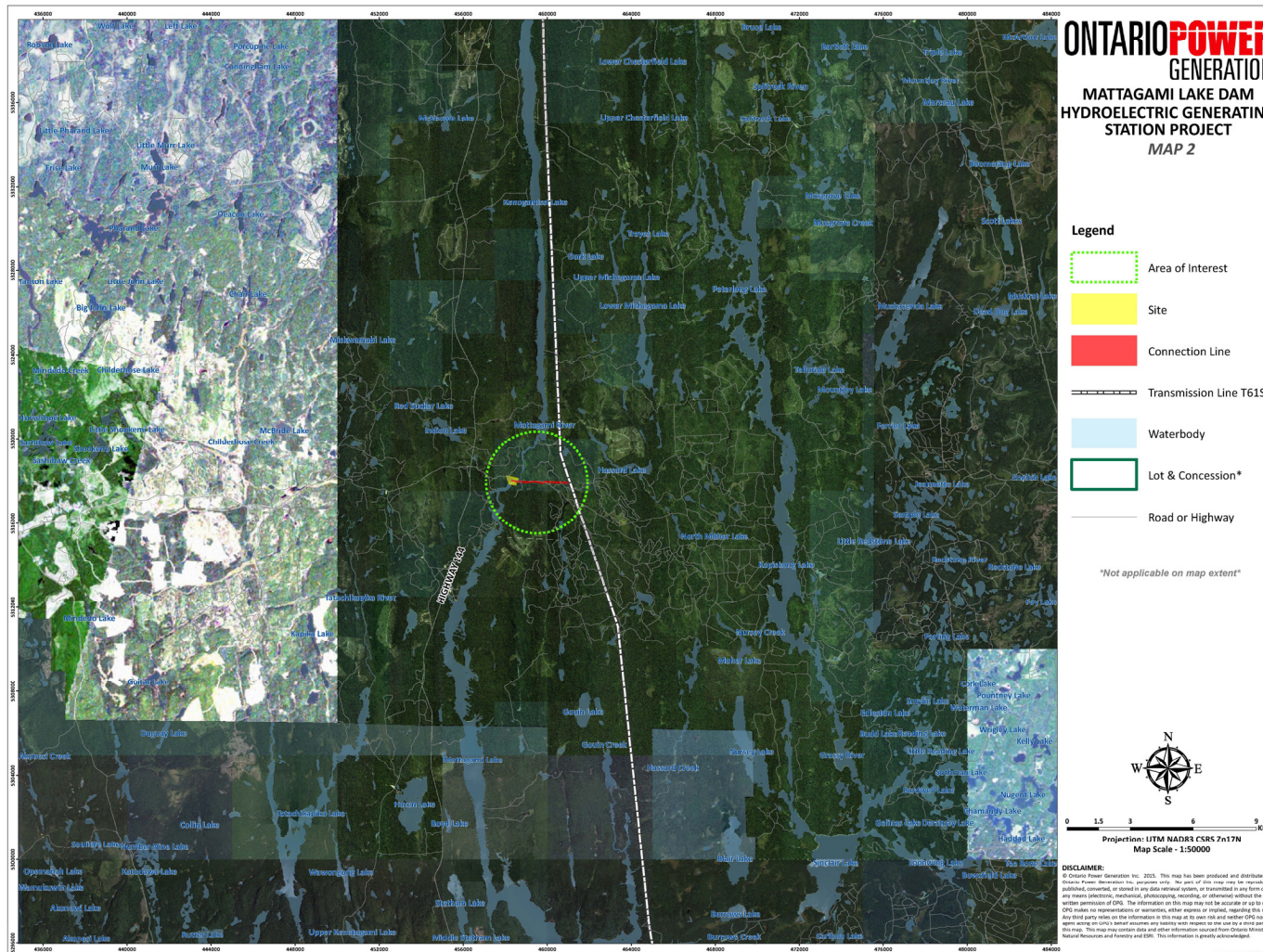
## Public Community Meeting

- As part of the LRP process, OPG is committed to consulting with Aboriginal communities and the public
  
- There are specific requirements for community engagement set out in the LRP:
  - ◆ Develop a LRP Community Engagement Plan
  - ◆ Host a public community meeting
    - Inform stakeholders about the meeting
    - Post a meeting summary
  - ◆ Provide detailed maps (Site Considerations Information)
    - Show nearby properties, parks, water bodies, First Nation Lands, etc.
    - These maps are on display at the public community meeting



# Site Considerations Information: Map 2

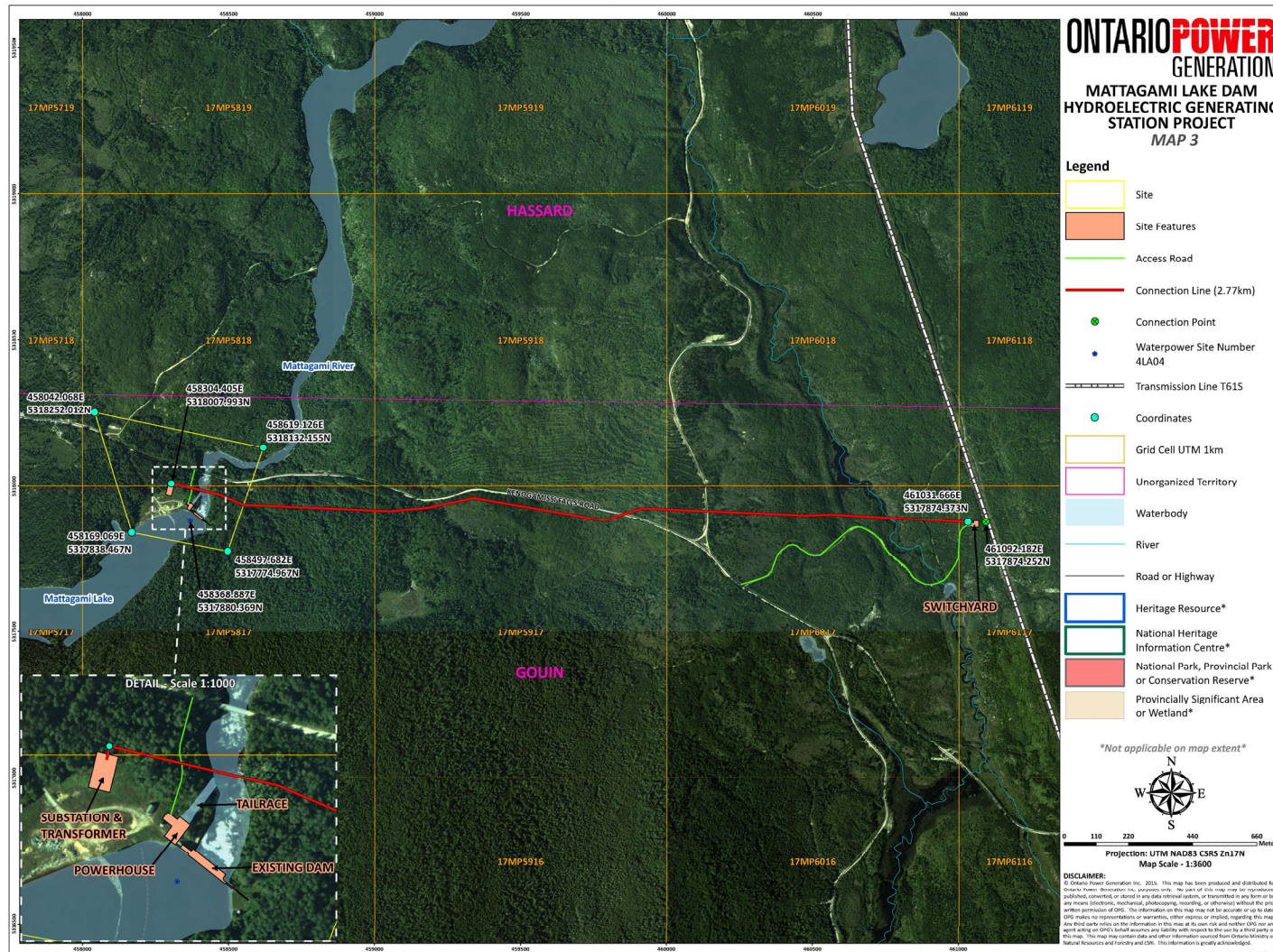
## Public Community Meeting



All maps were developed using data and other information sourced from the Ontario Ministry of Natural Resources and Forestry; ESRI; Land Information Ontario open database, as provided by the Ontario Ministry of Natural Resources and Forestry; and Geowarehouse – Title Search Ontario and Land Titles.

# Site Considerations Information: Map 3

## Public Community Meeting



All maps were developed using data and other information sourced from the Ontario Ministry of Natural Resources and Forestry; ESRI; Land Information Ontario open database, as provided by the Ontario Ministry of Natural Resources and Forestry; and Geowarehouse – Title Search Ontario and Land Titles.

# Post-LRP Contract: Continued Consultation

## Public Community Meeting

- OPG is committed to maintaining communication with interested individuals and groups throughout the Project life cycle.
- Consultation with Aboriginal communities, the public, and review agencies is an integral part of the LRP and environmental approvals processes.
- OPG maintains a Public Affairs program throughout the Province and in Northeastern Ontario (Timmins).
  - ◆ To provide on-going liaison with the public on all OPG facilities.
- Should the Project receive and accept a contract offer through the LRP I RFP process, planning will commence for the construction of the Project.
  - ◆ The Project team will comply with EA commitments and necessary consultation requirements related to construction and operation permits.

# Contact Us

## Public Community Meeting

- Members of the public are encouraged to contact OPG at any time with questions or comments about the Project.
- OPG appreciates and encourages public input and welcomes questions and feedback.
- Please fill in a comment sheet before you leave or send it to us by July 10, 2015.
  
- Project information is available at [www.mattagamilakedam-ea.com](http://www.mattagamilakedam-ea.com)
  
- For further information, please contact:
  - ◆ **Matt MacDonald**, Project Manager (OPG)
    - [matt.macdonald@opg.com](mailto:matt.macdonald@opg.com)
    - (416) 592-3990
  
  - ◆ **Gillian MacLeod**, Senior Environmental Advisor (OPG)
    - [gillian.macleod@opg.com](mailto:gillian.macleod@opg.com)
    - (416) 592-3481
  
  - ◆ **Phil Shantz**, Manager, SENES Consultants, now ARCADIS Canada Inc.
    - [phil.shantz@arcadis.com](mailto:phil.shantz@arcadis.com)
    - (905) 764-9380

**APPENDIX C**

**Comment Sheet for Mattagami Lake Dam Hydroelectric Generating Station Project  
Public Community Meeting**

**Mattagami Lake Dam GS Project – First Public Community Meeting**

June 25, 2015

4:00 p.m. to 8:00 p.m.

**Timmins Inn and Convention Centre, Timmins, Ontario**

Please take a few minutes to complete this questionnaire and leave it in the “comments” box or with an OPG representative. OPG is interested in hearing your comments and questions regarding the Mattagami Lake Dam GS Project.

**1. Do you have comments or concerns about the Mattagami Lake Dam GS Project?**

---

---

---

---

---

---

---

---

---

---

**2. Are you aware of any particular environmental, social, or economic features or values near the Mattagami Lake Dam site that we should be aware of?**

---

---

---

---

---

---

---

---

---

---

3. Do you have any other comments, questions, concerns or issues about the Project that you would like to share with members of the Project Team at this time?

---

---

---

---

---

---

---

---

4. In the event that OPG holds another event regarding the Project, would you like to be added to the mailing list?

Yes

No

If you would like Ontario Power Generation personnel to provide follow-up information or address questions, please leave your contact information below. ***Please print clearly.***

Name \_\_\_\_\_ Phone Number \_\_\_\_\_

E-mail Address \_\_\_\_\_

Street Address \_\_\_\_\_

City \_\_\_\_\_ Postal code \_\_\_\_\_

Please leave your completed form in the “comments” box or with an OPG representative. You may also send the form by fax, e-mail or mail, no later than **July 10, 2015** to:

**Mattagami Lake Dam GS Project**

Phil Shantz, Manager, SENES Consultants, now ARCADIS Canada Inc.

Fax: (905) 764-9386

E-mail: Phil.Shantz@arcadis.com

Mail: 121 Granton Drive, Unit 12

Richmond Hill, ON L4B 3N4

Project Information: [www.mattagamilakedam-ea.com](http://www.mattagamilakedam-ea.com)

