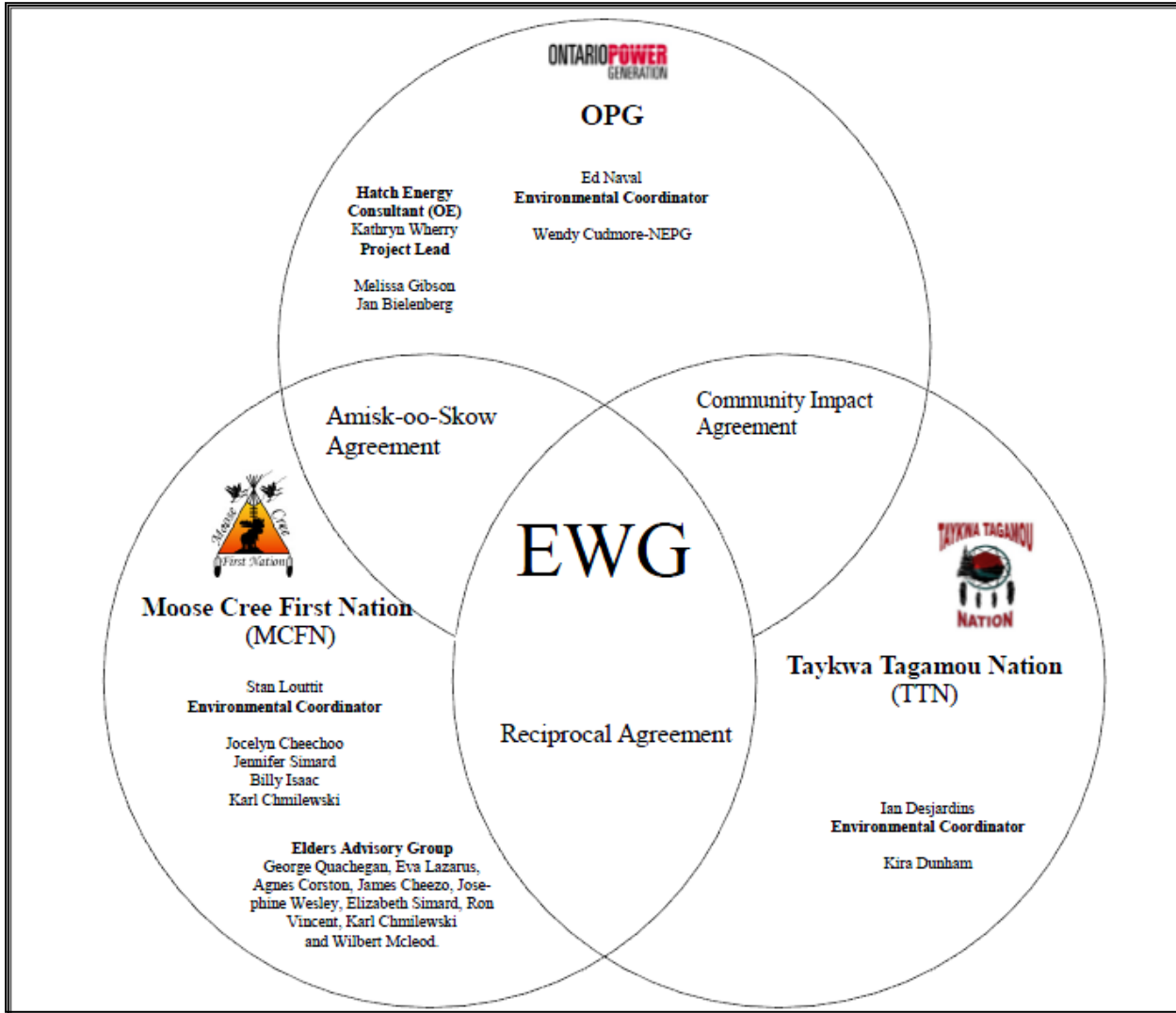


Environmental Working Group

Monthly Report

January 2015

ENVIRONMENTAL WORKING GROUP Relationship Organizational Chart



- Weekly Environmental Working Group (EWG) and EWG/Kiewit – Alarie, a Partnership (KAP) meetings.
 - The EWG review its Action Items that include priority permit reviews, and deliverables to the Mattagami Extensions Coordinating Committee (MECC).
 - KAP gives EWG a construction up date every week and discusses any upcoming issues and/or urgent permit reviews.
 - Specific items that were discussed are below.
- The EWG continued its review on KAPs proposed access road options for the construction of the fish habitat shoals downstream of Smoky Falls.
- TTN members of the EWG continued to work on developing their own Elders Advisory Group as well as the Custodial Body.
- TTN members of the EWG worked on incorporating TEK into the SENES Erosion and Aquatic Reports for Adam Creek (commissioned by the MECC).
- Inclusion of a First Nation perspective on the Cost Benefit Analysis of Mitigating and Reducing Spill in Adam Creek. MCFN have completed their draft, and TTN continues to work on their draft.
- MCFN and TTN of the EWG members continue to work on the development of a TEK Monitoring Program. The TEK Monitoring Program is intended to work with the OPG Environmental Effects Monitoring Plan to address term and condition 13 - Aboriginal Knowledge.
- In an effort to improve the understanding of TEK, members of the EWG have started reading articles that relate to TEK and/or hydroelectric development.
- Member of the EWG also attended the MECC meeting on January 22 in Timmins
- The FN members of the EWG are also making arrangements with John Pollock, SENES, to go to Manitoulin Island to assess the state of the organization of the collection of Cree artifacts (as per EA Term and Condition 2e).

ACTIONS TO BE COMPLETED in 2015

		Jan	Feb	Mar	Apr	May	June	July	Aug	Sept	Oct	Nov	Dec
EWG Environmental Due Diligence Audit #5													
EWG Face to Face Meetings													
EWG present to the MECC the result of its review of the draft "Cost Benefit Analysis of Mitigating and Reducing Adam Creek Spill" (Condition 4(c) and (e) of EA T&Cs) by Hatch.													
EWG present to the MECC the results and recommendations of periodic re-evaluations (Condition 10 of EA T&Cs).													
EA T&C 3a: Visual and Aesthetic Impacts EA T&C 4b: Hydrology, Fish and Aquatic Habitat	EWG present to the MECC "Environmental Effects Monitoring Plan, Lower Mattagami Development"												
EA T&C 5b: Terrestrial Ecology EA T&C 6: Erosion and Sedimentology EA T&C 7: Mercury EA T&C 14: Permit Review and Compliance Monitoring Protocol	EWG present to the MECC "TEK - Environmental Effects Monitoring Plan, Lower Mattagami Development"												TBD
EA T&C 3a: Visual and Aesthetic Impacts	EWG present to the MECC the results and recommendations of Little Long Rehabilitation Plan												
EA T&C 5d: Terrestrial Ecology	EWG present to the MECC the results and recommendations of Harmon Rehabilitation Plan												
	EWG present to the MECC the results and recommendations of Kipling Rehabilitation Plan												
	EWG present to the MECC the results and recommendations of Smoky Falls Rehabilitation Plan												
EWG presents to the MECC a draft of the 'Peoples of the Moose River Basin', the cultural text outlined in EA T&C 2c.													
EWG to look into having a list prepared of Cree artifacts within the Moose River Basin as per EA Term and Condition 2e.													
Completed: ■ Pending: ■ *Additional work still required to fulfill EA Term and Condition													

Construction

Little Long

- KAP continued to replace water damaged electrical components in the draft tube gallery and sump pit.
- KAP and Andritz continued to work on closing out punch list items.
- Little Long Unit was 3 (Figure 1) was declared in service on January 19, 2014.



Figure 1: Little Long Unit 3 June 2014

Harmon

- KAP and Andritz continued to work on closing out punch list items.
- Harmon (Figure 2) was declared in-service on June 3rd, 2014.



Figure 2: Harmon overview, January 2015

Kipling

- Grouting crews continued to address water seepage on the generator floor and in the turbine pit access way.
- Kipling was declared in-service on December 17, 2014.



Figure 3: Kipling overview January 2015



Figure 4: Kipling Unit 3

Smoky Falls

- BOP Mechanical and Electrical installation throughout the powerhouse continued to progress.
- Architectural work continued to advance throughout the powerhouse, including:
 - HVAC ductwork and electrical cabling in various locations;
 - Priming and painting of various rooms and structures throughout the plant;

- Light fixtures in a number of locations throughout the powerhouse;
- Steel doors and handrails in various locations;
- KAP and Alstom continued to work on closing out punch list items.
- Construction on all the generating units are complete:
 - Unit 1: declared in-service on September 30, 2014.
 - Unit 2: declared in-service on October 9, 2014.
 - Unit 3: declared in-service on December 2, 2014.



Figure 5: Smoky Falls overview January 2015

Demobilization

- The Demobilization crew removed the following temporary structures or equipment:
 - Washrooms, KAP trailer and Andritz trailer from the Kipling site;
 - Dismantling and winterization of Dorm 7 at the Permanent Camp;
 - Alstom trailers at Smoky Falls;
 - Light equipment is being removed from site as appropriate and redeployed.

Monthly Summary – January 2015

SPILLS			
No. of Spills:		9; Spill Reports 482-490 (see Figure 6 for LMRP spills breakdown).	
Classification of Spills:		<u>KAP Project Classification</u> Minor – 9 Moderate – 0 Major – 0 To Water - 0 <u>MOE Classification</u> Non-reportable - 9 Reportable to MOE <ul style="list-style-type: none"> - Class C – 0 - Class B – 0 - Class A – 0 	
Reportable Spills			
No.	Quantity /Product Spilled	Spill Site	Reason for being Reportable
n/a	n/a	n/a	n/a
KAP Project Classification Minor: ≤ 10L Moderate: Between 10L and 100L Major: ≥100L To Water: Any amount is reportable to the MOE (See Figure 7: KAP Spills Response Flowchart)		MOE Classification (see Reportable and Non-reportable Spills definition below) Non-reportable: < 100L Reportable to MOE <ul style="list-style-type: none"> • Class C - Less Serious • Class B – Serious • Class A – Very Serious 	
Sediment Pond Exceedance of Effluent Objective			
No. of Exceedance days recorded	Location	Mitigation Measures used	
n/a			

Spills Response

When **any spill** occurs on site, KAPs spill response process is to be followed (Figure 7). This includes notification of the Supervisor and KAPs Environmental Department, and an assessment of the severity of the spill. Regardless of the quantity, clean-up measures are implemented for **every spill** using spill kits that are available throughout the site (materials used for clean-up and any contaminated soil are removed from the site). A spill report is then prepared for **each spill that occurs** which outlines the location, type, severity and quantity of the spill, in addition to details on how the spill occurred, how it was cleaned up and measures implemented on how the spill could be avoided for the future. This report is sent out to several OPG and Hatch representatives as well as all EWG members.

Reportable and Non-reportable Spills:

Section 92 of the *Environmental Protection Act* (EPA) requires that a **spill** be reported forthwith to the Ministry of the Environment. The definition of a spill in the EPA (subsection 91.1) is: a discharge,

- (a) into the natural environment,
- (b) from or out of a structure, vehicle or other container, and
- (c) that is abnormal in quality (e.g. the product spilled) or quantity (e.g. the amount spilled) in light of all the circumstances of the discharge.

Spills that are exempt from reporting to the Ministry of the Environment (ie. non-reportable) are discharges that don't fall within the 'spill' definition or, are exempted under EPA Regulation 675/98, *Classification and Exemptions of Spills and Reporting of Discharges*. This includes (not limited to) Class VI – Motor Vehicle exemptions, which exempts reporting of spills that are less than 100 L of fluid from a motor vehicle.

Subsection 30 .2 of the *Ontario Water Resources Act*, requires that the discharge of any material of any kind into water that is not in the normal course of events (e.g. regardless of quantity or quality) be reported to the Ministry of the Environment.

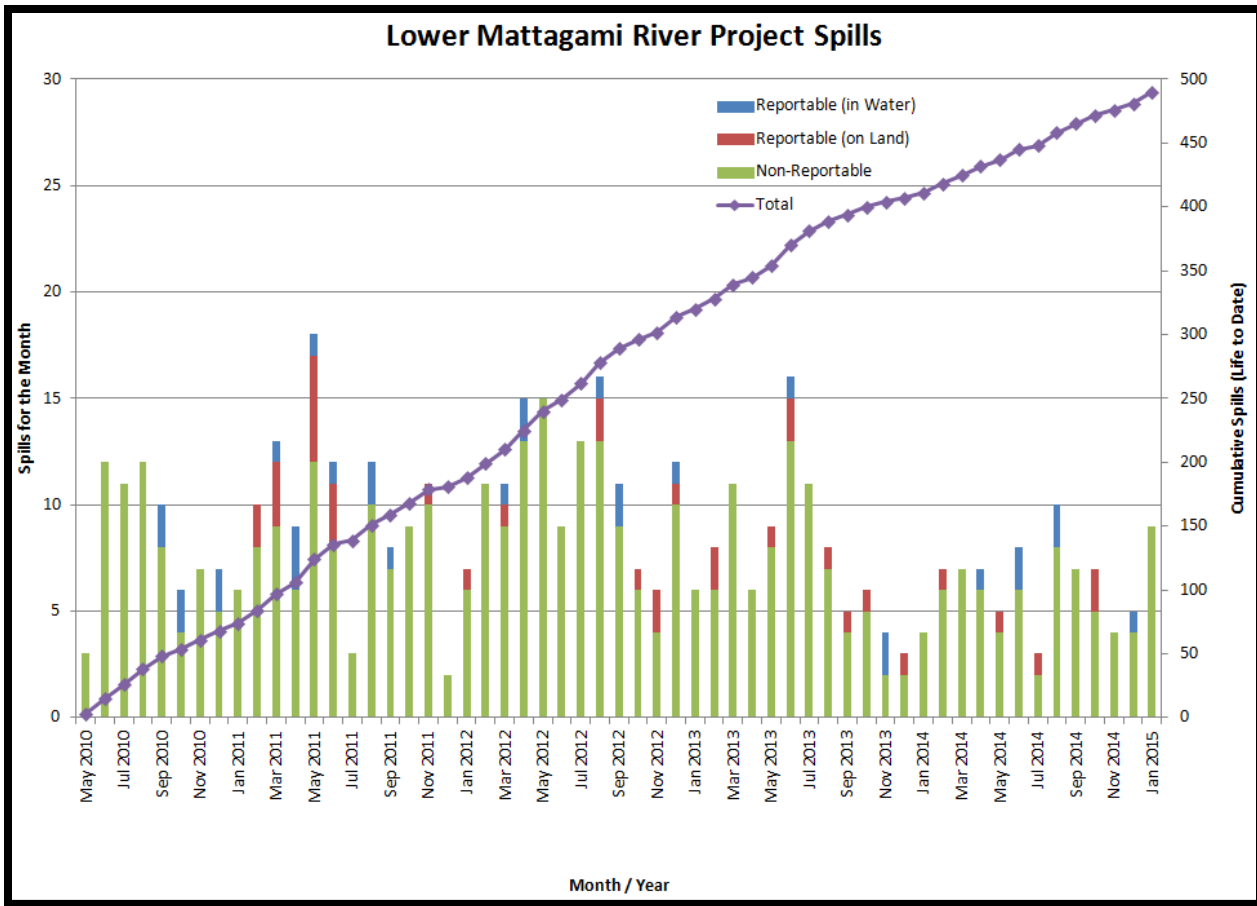


Figure 6: Lower Mattagami River Project spills

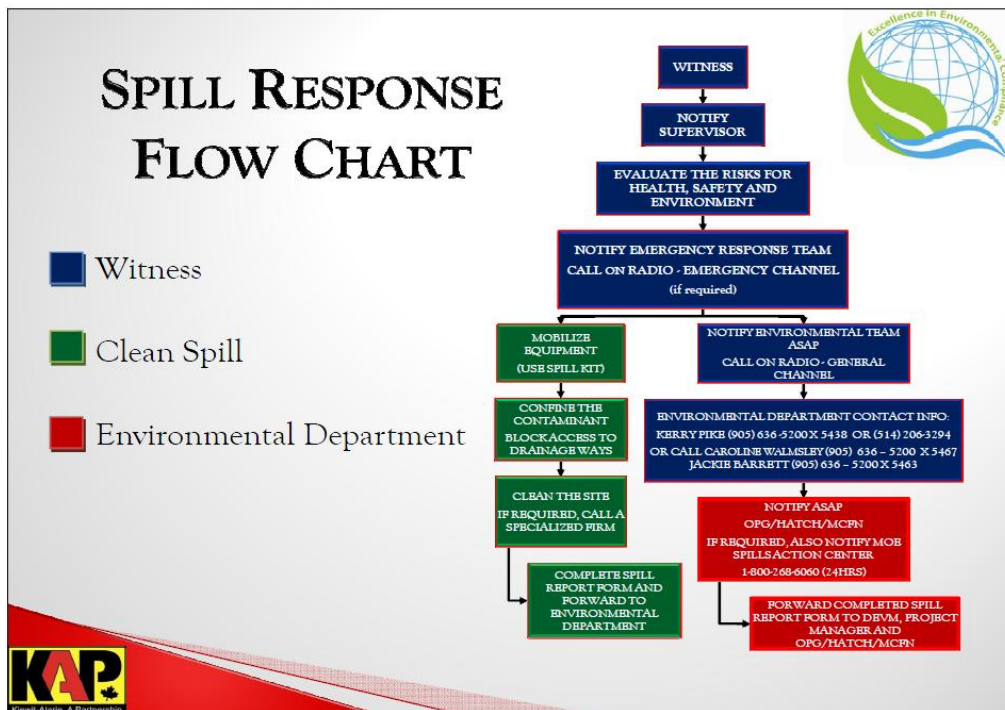


Figure 7: KAP Spills Response Flowchart

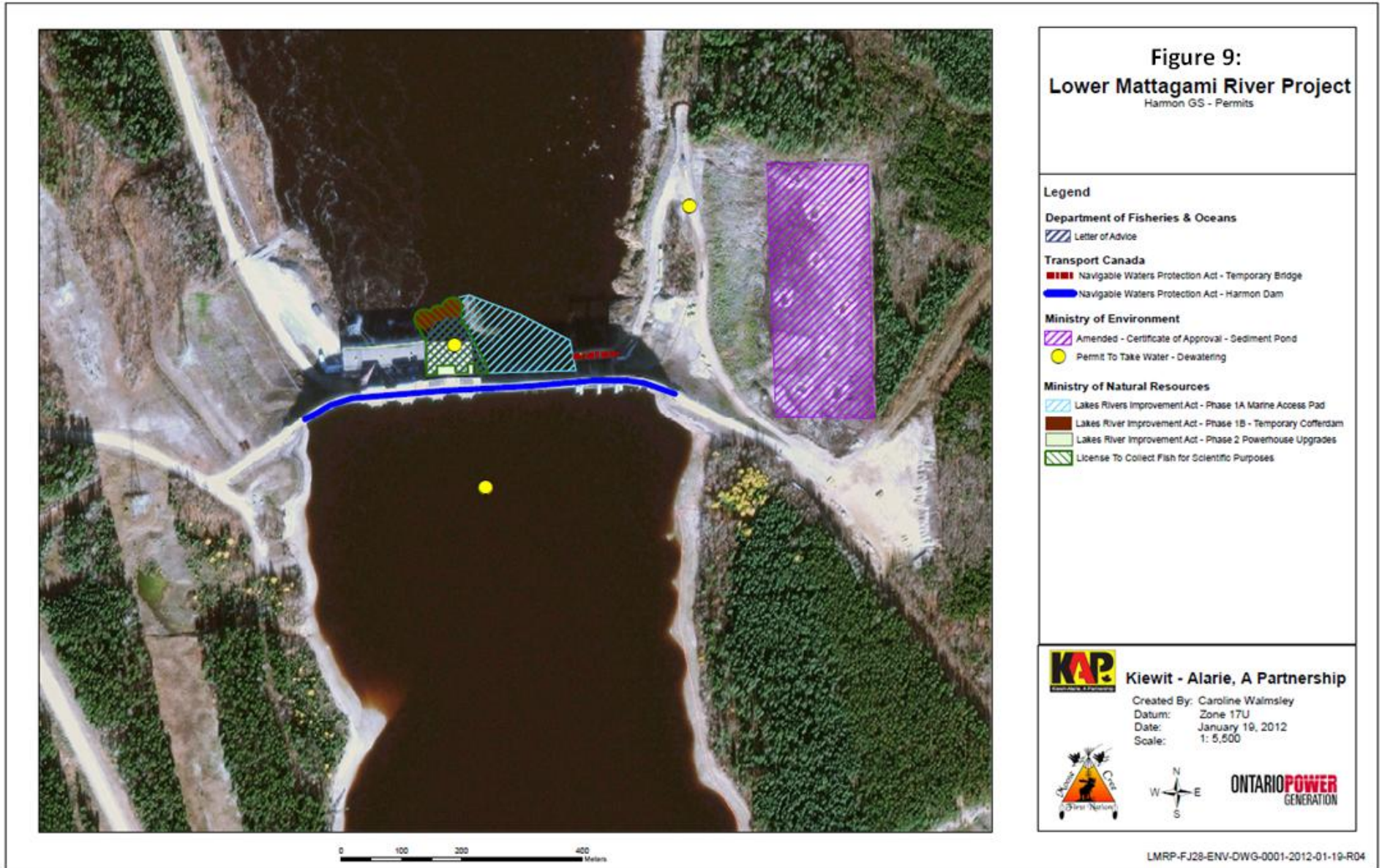
Monthly Permit and Approval Review Table

No.	PERMIT AND/OR APPROVAL REVIEW	Reviewed by EWG	Submitted to KAP
-	0	0	0

**Provincial Environmental Assessment Term and Condition (EA T&C)
Reports Review and Environmental Audits Table**

No.	Report or Audit	Applicable EA T&C	Reviewed or Under Review by EWG	Submitted to KAP	Submitted to MECC
14	KAP Kipling Site Rehabilitation Plan.	3a and 5			-
13	KAP Harmon Site Rehabilitation Plan.	3a and 5			-
12	Cost Benefit Analysis of Mitigating and Reducing Spill in Adam Creek	4c		n/a	-
11	Mercury in Fish Flesh Summary Report	4b and 7a		n/a	
10	Fish Habitat Assessment Report	4b		n/a	
9	Terrestrial Habitat Restoration Downstream of Kipling GS	5b		n/a	-
8	Draft Environmental Effects Monitoring Plan	3a, 4b, 5b, 6, 7 and 14		n/a	
7	KAP Little Long Site Rehabilitation Plan.	3a and 5			
6	Operation Overview Report	4a		n/a	
5	Waste Management Plan	19			
4	Noise Control Plan	18			
3	The Interim Measures Agreement as it relates to EA Term and Condition 14c (Permit Review and Compliance Monitoring Protocol)	14c			
2	2013 Environmental Audit	14			
1	2012 Environmental Audit	14			







0 100 200 400 Meters

Figure 10:
Lower Mattagami River Project
Kipling GS - Permits

Legend

Department of Fisheries & Oceans

Letter of Advice

Transport Canada

Approval - Navigable Waters Protection Act - Kipling Dam

Ministry of Environmental

Amended Certificate of Approval - Sediment Pond

Permit To Take Water - Dewatering

Ministry of Natural Resources

Lakes River Improvement Act - Phase 1A - Marine Access Pad

Lakes Rivers Improvement Act - Phase 1A - 1 Deflector Wall

Lakes Rivers Improvement Act - Phase 1A - 2 Spillway Location Revised

Lakes Rivers Improvement Act - Phase 1B Temporary Cofferdam

Lakes Rivers Improvement Act - Phase 2 Powerhouse Upgrades

Licence to Collect Fish for Scientific Purposes



Kiewit - Alarie, A Partnership

Created By: Caroline Walmsley

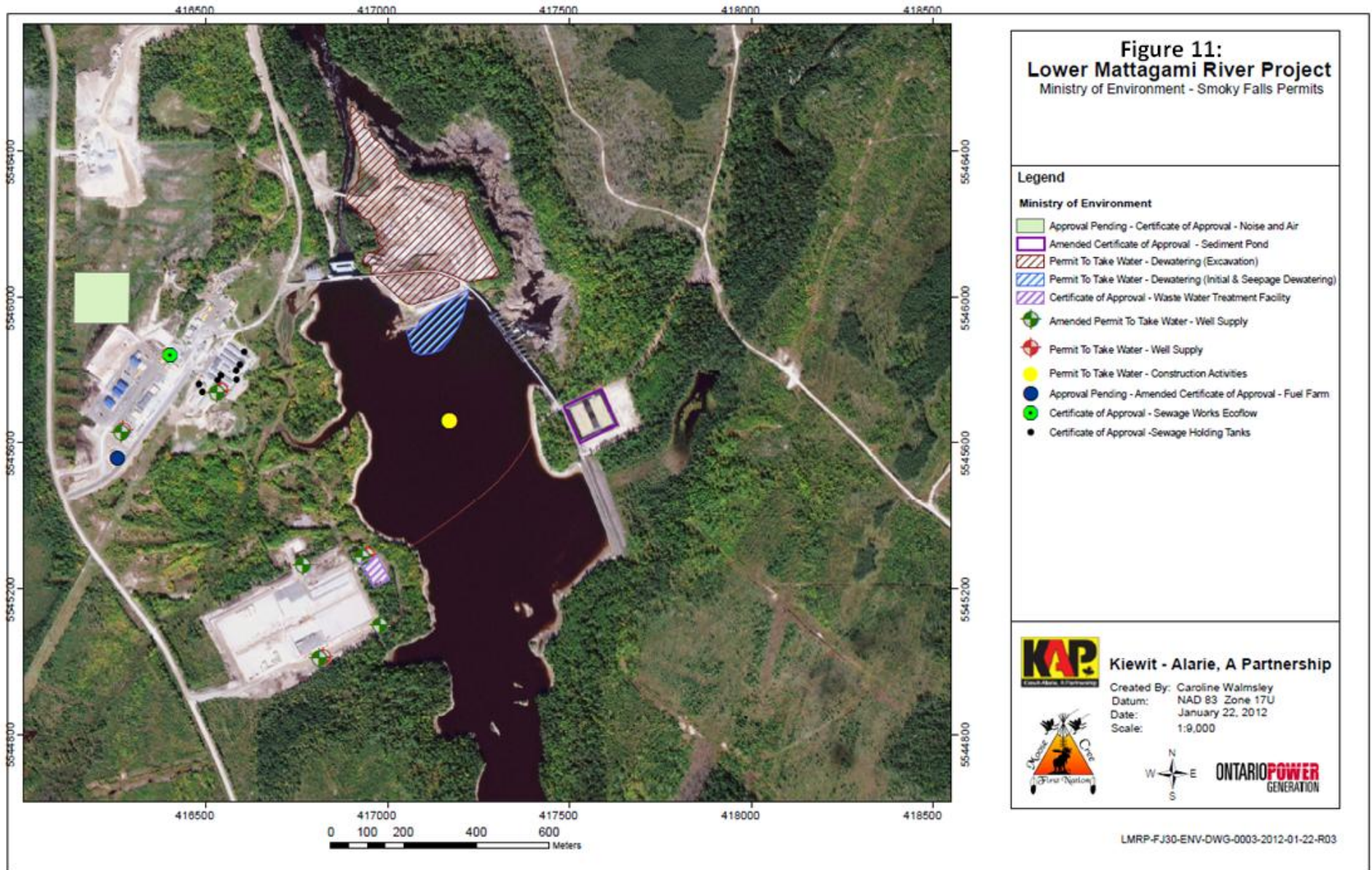
Datum: Zone 17U

Date: January 19, 2012

Scale: 1: 5,500



LMRP-FJ27-ENV-DWG-0001-22012-01-19-R04



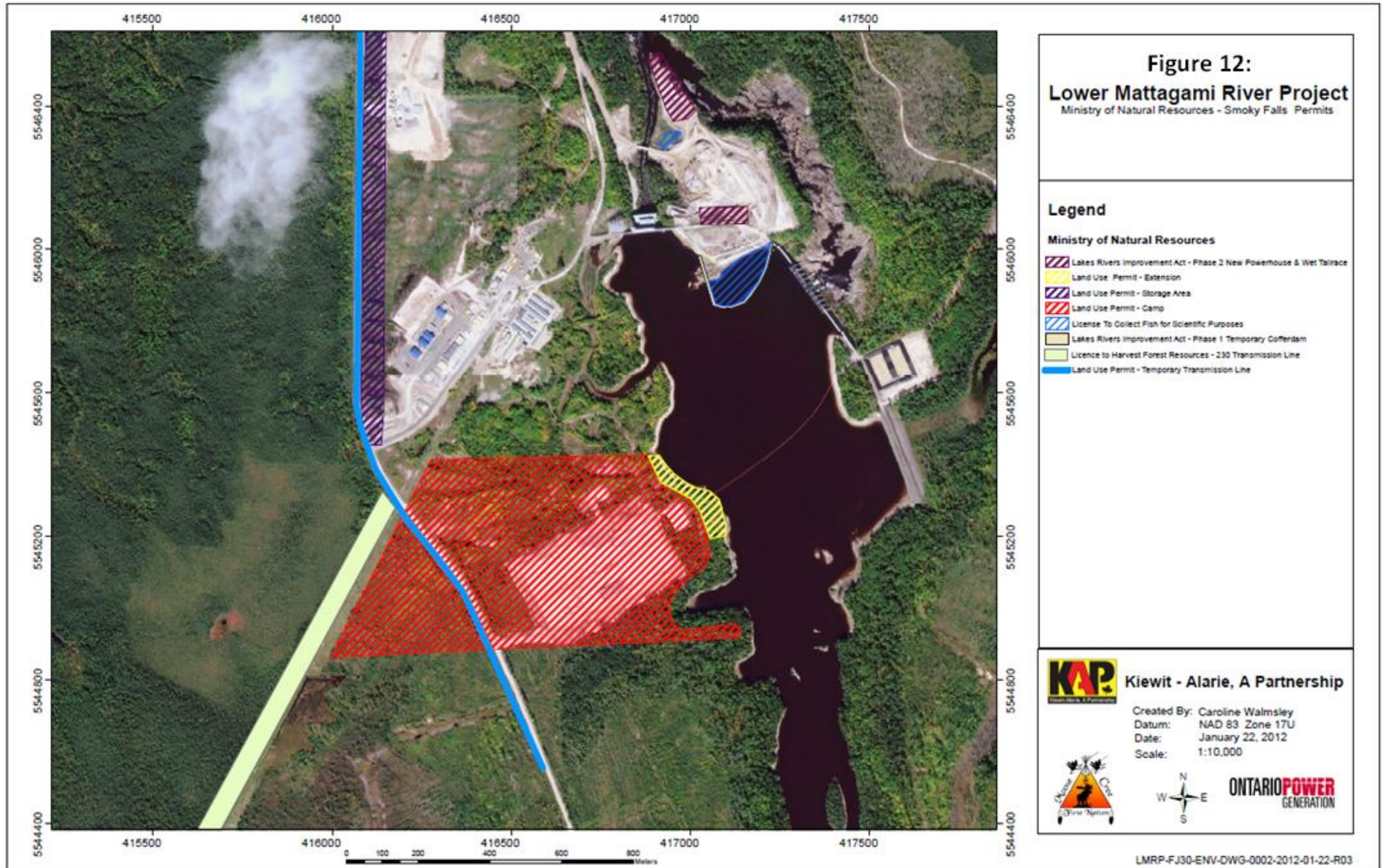


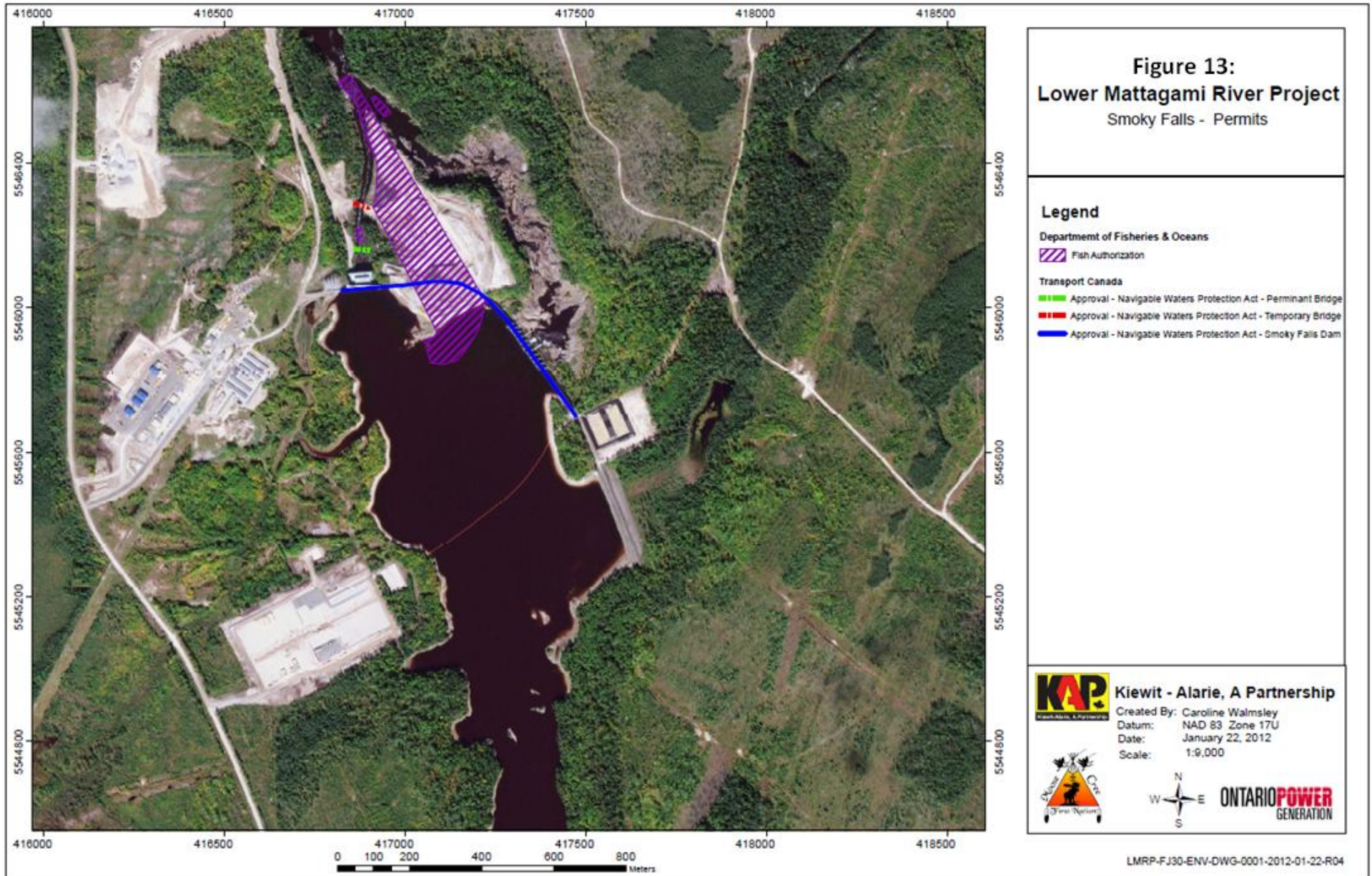
Figure 12:
Lower Mattagami River Project
Ministry of Natural Resources - Smoky Falls Permits

- Legend**
- Ministry of Natural Resources**
- Lakes Rivers Improvement Act - Phase 2 New Powerhouse & Wet Tailrace
 - Land Use Permit - Extension
 - Land Use Permit - Storage Area
 - Land Use Permit - Camp
 - License To Collect Fish for Scientific Purposes
 - Lakes Rivers Improvement Act - Phase 1 Temporary Cofferdam
 - Licence to Harvest Forest Resources - 230 Transmission Line
 - Land Use Permit - Temporary Transmission Line

KAP Kiewit - Alarie, A Partnership
Construction & Project Management

Created By: Caroline Walmsley
Datum: NAD 83 Zone 17U
Date: January 22, 2012
Scale: 1:10,000

LMRP-FJ30-ENV-DWG-0002-2012-01-22-R03



Issues and Concerns

- MCFN members of the EWG were concerned about workers feeding foxes and drip trays not being properly used.

Action required: KAP have updated their procedures to include immediate discipline on workers who are caught feeding the wildlife. KAP will also ensure drip trays are used properly.